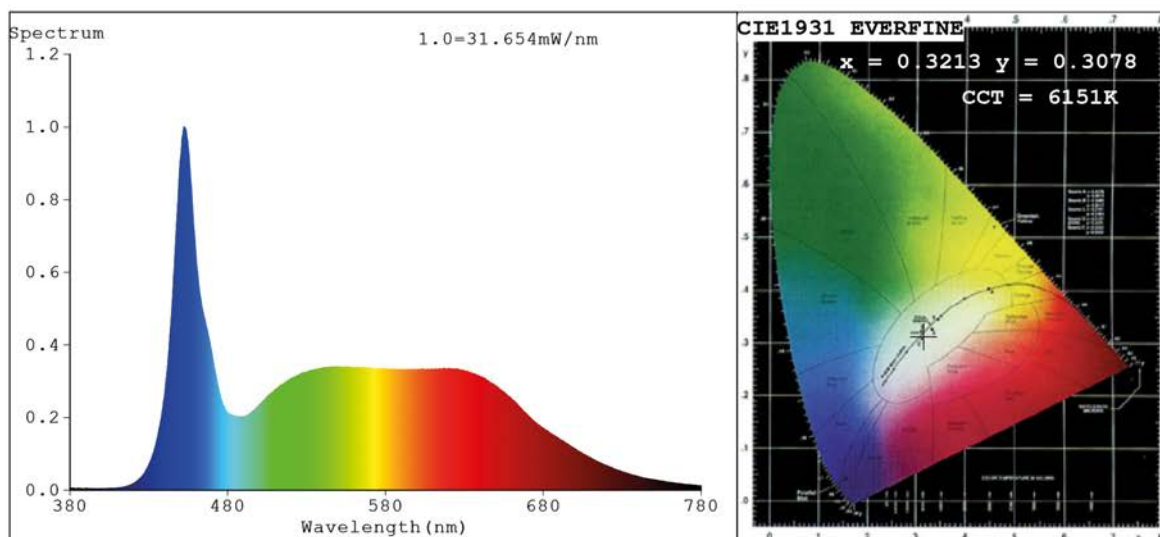


## Spectrum Test Report



### Color Parameters:

Chromaticity Coordinate:  $x=0.3213$   $y=0.3078$   $u'=0.2124$   $v'=0.4578$   
 CCT=6151K (Duv=-0.0127) Dominant WL:Ld = -380.0nm Purity=7.7%  
 Ratio: R=17.5% G=76.2% B=6.3%; Peak WL:Lp=452.5nm FWHM=19.5nm  
 Render Index: Ra=93.5 CRI=90.8 TM30:Rf=86 Rg=105  
 R1 =92 R2 =95 R3 =91 R4 =96 R5 =93 R6 =89 R7 =98  
 R8 =95 R9 =83 R10=92 R11=94 R12=68 R13=92 R14=94 R15=89

### Photo Parameters:

Flux = 746.9 lm Eff. : 63.10 lm/W Fe = 2.844 W Scotopic:1715.3 S/P:2.2966

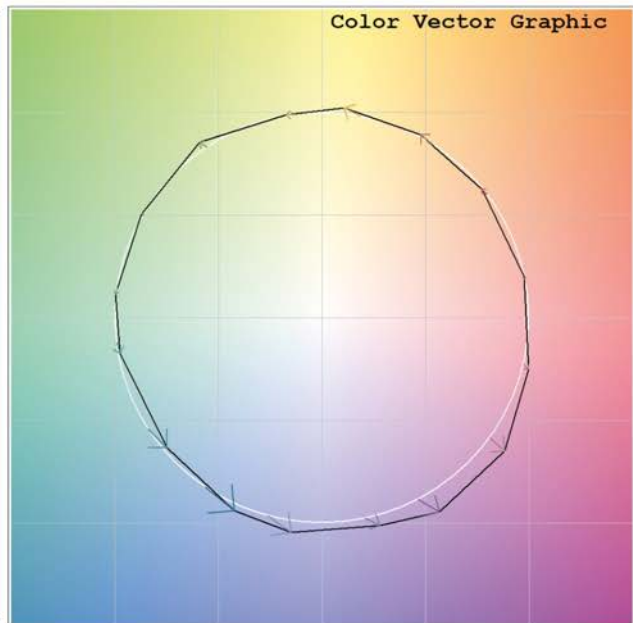
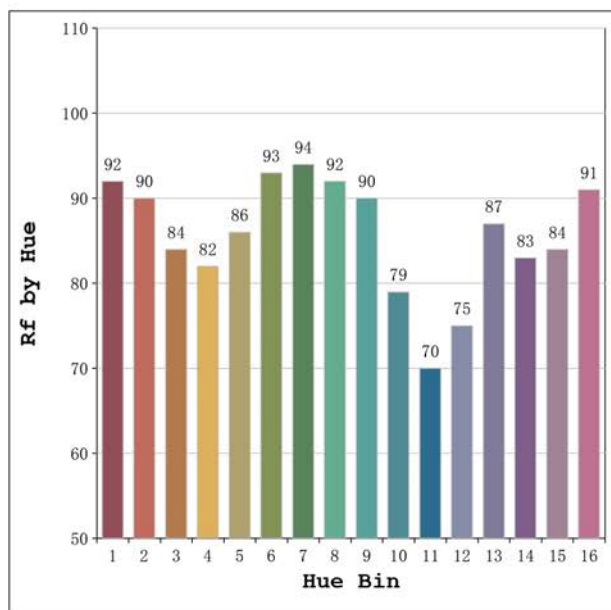
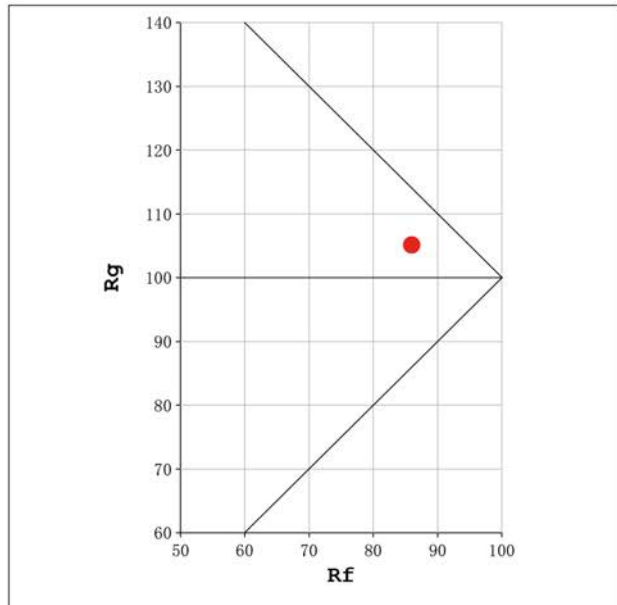
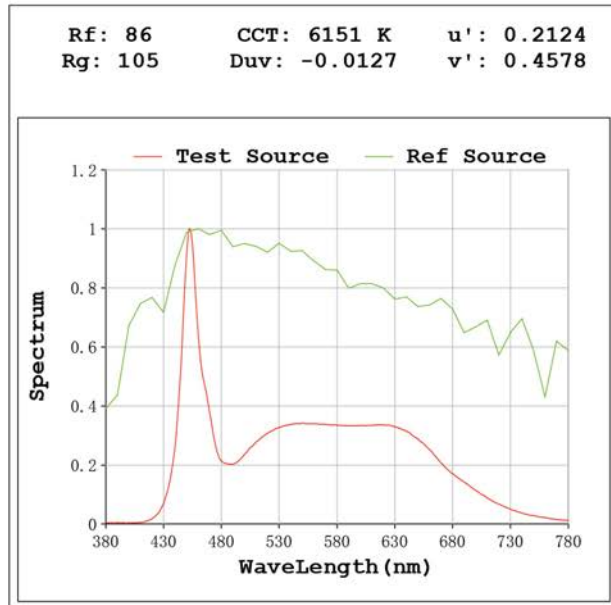
### Electrical parameters:

V = 23.998 V I = 0.4932 A P = 11.84 W PF = 1.000

Status: Integral T = 1000 ms Ip = 42291 (65%)

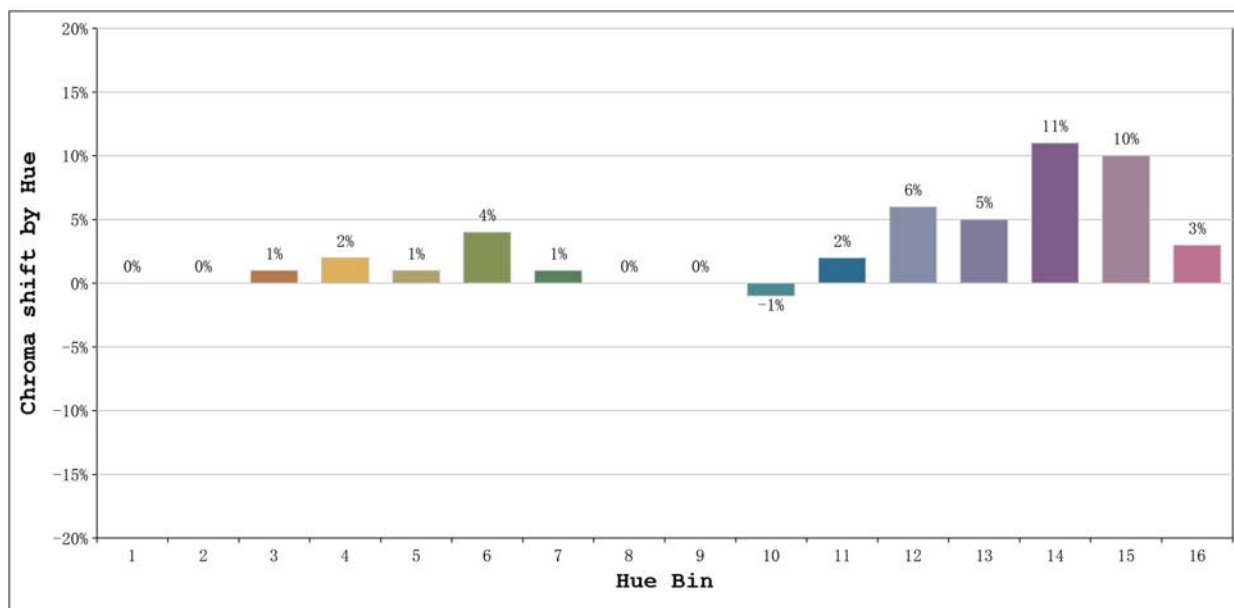
Model:Ecoled Neón Cairo 6000K  
 Tester:Sergio Carneros  
 Temperature:27Deg  
 Manufacturer:Luz Negra S.L

Number: 10.242  
 Date:2023-11-17 12:39:39  
 Humidity:40%  
 Remarks:100cm de néon



Model:Ecoled Neón Cairo 6000K  
 Tester:Sergio Carneros  
 Temperature:27Deg  
 Manufacturer:Luz Negra S.L

Number: 10.242  
 Date:2023-11-17 12:39:39  
 Humidity:40%  
 Remarks:100cm de néon



Hue Bin	Hue Angle	Rf	Graphic shift(%)	
			Chroma	Hue
1	0.0° - 22.5°	92	0	1
2	22.5° - 45.0°	90	0	3
3	45.0° - 67.5°	84	1	7
4	67.5° - 90.0°	82	2	8
5	90.0° - 112.5°	86	1	5
6	112.5° - 135.0°	93	4	2
7	135.0° - 157.5°	94	1	1
8	157.5° - 180.0°	92	0	3
9	180.0° - 202.5°	90	0	5
10	202.5° - 225.0°	79	-1	13
11	225.0° - 247.5°	70	2	18
12	247.5° - 270.0°	75	6	13
13	270.0° - 292.5°	87	5	6
14	292.5° - 315.0°	83	11	5
15	315.0° - 337.5°	84	10	0
16	337.5° - 360.0°	91	3	-1

Model:Ecoled Neón Cairo 6000K  
 Tester:Sergio Carneros  
 Temperature:27Deg  
 Manufacturer:Luz Negra S.L

Number: 10.242  
 Date:2023-11-17 12:39:39  
 Humidity:40%  
 Remarks:100cm de néon